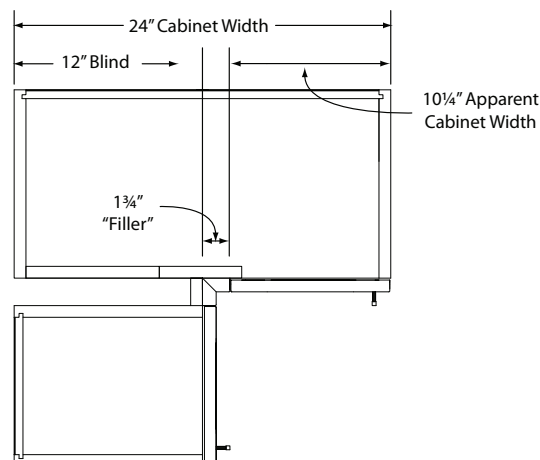


“Pulling” a Blind Corner Wall Cabinet allows you to maintain symmetry along a wall, while maximizing corner space. This action will allow you to adjust the location of the apparent (or visible) portion of the cabinet.

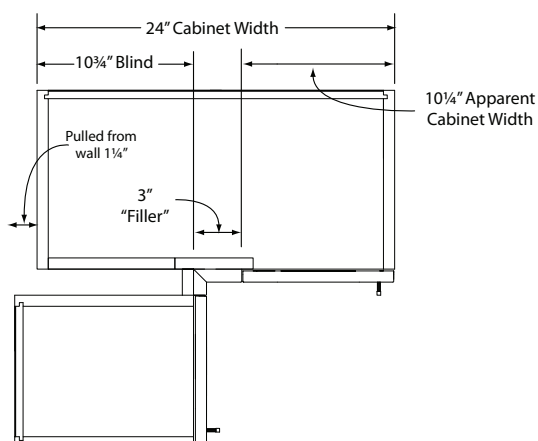
Example using a **WC2436L**

When placed all the way into the corner, a 24” wide Blind Corner Wall has 12” of width hidden behind the adjacent perpendicular cabinet, 1 ¾” of exposed finished surface that acts as a filler, and a door that appears as a 10 ¼” cabinet.



WC24 Wide	10 1/8W DOOR
WC27 Wide	13 1/8W DOOR
WC30 Wide	16 1/8W DOOR
WC33 Wide	19 1/8W DOOR
WC36 Wide	22 1/8W DOOR

REDUCTION IN CABINET WIDTH REDUCES DOOR WIDTH



If your design dictates that you need to maintain the appearance of a 10 ¼” wide “cabinet”, but need to move the position of the cabinet, the entire Blind Cabinet can be pulled off the adjacent wall, up to an additional 3”. The newly exposed surface of the cabinet is still finished to match the exterior.

Order wider Overlay Fillers to finish up the corner.

If ordering a Blind Peninsula Cabinet, remember to order an additional filler for the back side of the cabinet.