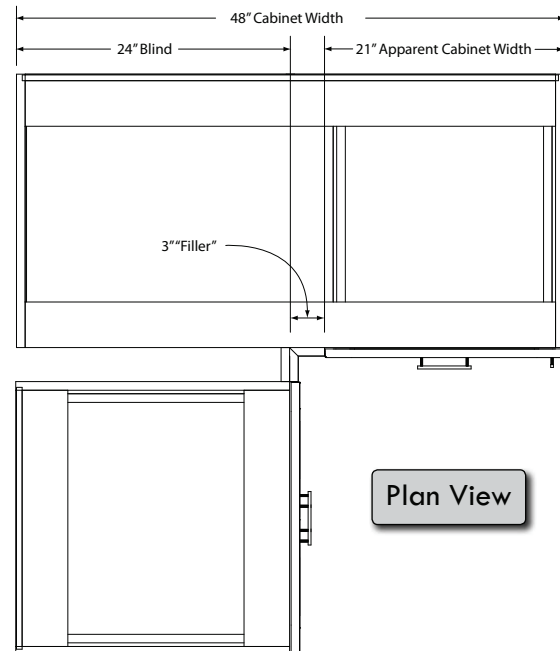


“Pulling” a Blind Corner Base Cabinet allows you to maintain symmetry along a wall, while maximizing corner space. This action will allow you to adjust the location of the apparent (or visible) portion of the cabinet. If cabinet is installed into the corner, there is already 3” of clearance built into the cabinet.

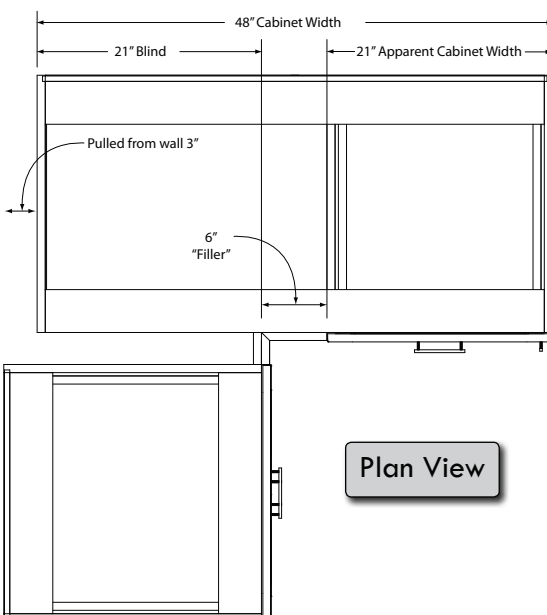
Example using a **BCB48L**

When placed all the way into the corner, a 48” wide Blind Corner Base has 24” of width hidden behind the adjacent perpendicular cabinet, 3” of exposed finished surface that acts as a filler, and a door/drawer front that appears as a 21” cabinet.

B39	11 7/8 DOOR
B42	14 7/8 DOOR
B45	17 7/8 DOOR
B48	20 7/8 DOOR
B51	23 7/8 DOOR



REDUCTION IN CAB WIDTH REDUCES WIDTH OF DOOR



If your design dictates that you need to maintain the appearance of a 21” wide “cabinet”, but need to move the position of the cabinet, the entire Blind Cabinet can be pulled off the adjacent wall, up to an additional 3”. The newly exposed surface of the cabinet is still finished to match the exterior.

Order wider Overlay Fillers to finish up the corner.

If ordering a Blind Peninsula Cabinet, remember to order an additional filler for the back side of the cabinet.